

NH fuse switch-disconnector size 00, 160 A, bus-mounting (33 398)



Description

Article

Part No.: 33 398

QUADRON® 60Classic

NH fuse switch-disconnector size 00, 160 A, bus-mounting
connection screw M8, outgoing terminal bottom/top

System

60Classic

Product group 09

Subgroup 24

pack size 1

EAN 4021267333980

Advantages of the product

CrossLink® adapter technology

Fast and safe conversion of the connection for top or bottom; the parts under voltage remain shock protected

Simple and safe clicking into place and making contact

Safe connection through shock protection split into 2

Busbar supports for flat busbars can be mounted above each other

Catalog page 2015 : 2/23, 2/29

eCl@ss 6.1 27142108

eCl@ss 7.1 27142108

ETIM 4.0 EC001040

ETIM 5.0 EC001040

Approvals

Standards

IEC 60947-1:2007 + A1:2010 + A2:2014

IEC 60947-3:2008 + A1:2012

Approvals

IEC (CB), Germanischer Lloyd, VDE, CCC



Type number: QCB-NH00

CCC certificate: 2010010302403934

Product data

Electrical data

Rated current (IEC): 160 A

Rated voltage (IEC) AC: 690 V

Rated voltage (IEC) DC: 440 V

Utilisation category AC-21B (690V)
AC (IEC 60947-3) : AC-22B (500V)
AC-20B (1000V) at pollution degree 2

visible information required if used at more than 690V AC: do not switch under load

Utilisation category DC specifications: 2 current paths (L1,L3) in series
DC (IEC 60947-3) : DC-21B (220V)
DC-21B (440V/100A)
DC-22B (220V/63A)
DC-20B (1000V) at pollution degree 2

visible information required if used at more than 440V DC: do not switch under load

Power dissipation:

The power dissipation at a typical load of 80% of the rated current results to 11.3 W.
(The power dissipation for operation with rated current would be 17.7 W.)

rated isolation voltage U_i (AC): 800 V
Rated surge voltage U_{imp} : 6 kV
max. permitted voltage (IEC) AC: 800 V
max. permitted voltage (IEC) DC: 800 V

cond. rated short-circuit current with fuses: 50 kA / 690V
approved with fuse links of characteristics: gG

for fuse links IEC 60269-2 / DIN VDE 0636-2 size 00 up to 12W power dissipation

In accordance with the specified AC and DC switching properties and in consideration of the overload conditions, certain distances to earthed metal parts are to be adhered to. detailed information upon inquiry

When several devices are used side-by-side in continuous operation, the rated load factor specified in IEC / EN 61439-1, Table 1, must be observed.

System component: degree of protection IP30 at front as per DIN EN 60529, degree of protection near terminal depends on installation

adapter module: front side degree of protection IP20 as per DIN EN 60529 (finger-safe)

Mechanical data

W x H x D: 106 x 200 x 97

Weight: 103 kg/100

Poles: 3-pole

front degree of protection: IP30

Busbar connector: externally tensioned contacting, convenient click mechanism, simple conversion of the combination bases from 5 to 10mm-thick busbars

Terminal points

screw M8

Material properties

Main body:	temperature stability 125°C, self-extinguishing in acc. to UL 94, creepage resistance CTI 200, halogen-free
Shock protection cover:	temperature stability 125°C, self-extinguishing in acc. to UL 94, creepage resistance CTI 200
Handle:	temperature stability 125°C, self-extinguishing in acc. to UL 94, creepage resistance CTI 200
Adapter plate:	temperature stability 125°C, self-extinguishing in acc. to UL 94, creepage resistance CTI 200, halogen-free
Contacts:	spring-loaded copper contacts, silver plated
Connecting screws:	screw M8, galvanized, chromized

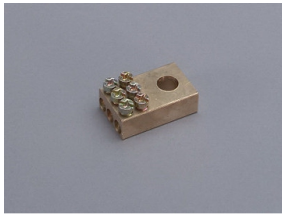
Version

Variant with box terminals: 33 198

Variant with electronic fuse monitoring 33 324

Variant with electromechanical fuse monitoring 33 206

Accessories



01 182

tunnel terminal

1 x 2,5 - 16mm² + 2 x 2,5 - 25mm²

size 00

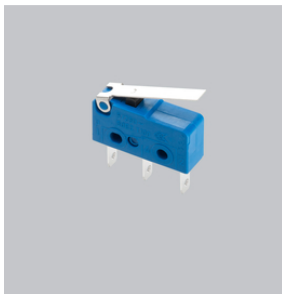


03 849

lid interlock

for sealing wire

Size 00

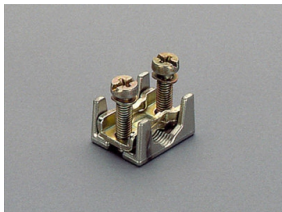


33 156

pilot switch for lid position

pilot switch: 250V AC / 5A; 30V DC / 4A

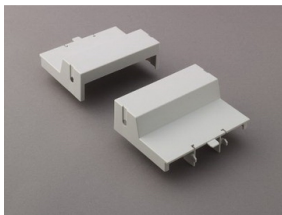
Size 000, 00, 2, 3



33 224

Wedge clamp terminal for switch disconnecter
for 16-70 mm², Cu and Al

size 00



33 315

trim cover, 2 parts

for NH-LTS size 00

size 00

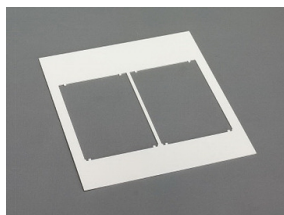


33 317

trim strip

for NH-LTS size 00

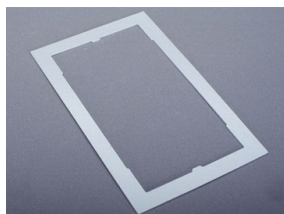
size 00

**78 105**

Trim frame, double

232 x 210, not for 33221, 33222

size 00

**78 893**

Trim frame, single

130 x 210, not for 33221, 33222

size 00

**79 811**

cover for connecting space

for 33 200, 33 208, 33 329, 33 394, 33 398, 33 420

size 00